

Binocular Indirect Ophthalmoscopes

Since 1957, when we introduced the Fison, our first binocular indirect ophthalmoscope, Keeler has developed a reputation as the innovator in the development and manufacture of indirect ophthalmoscopes. 2003 was no exception and saw the introduction of the first Keeler "Wireless" indirect ophthalmoscopes available on our All Pupil or Vantage models.

Go Wireless gives you the freedom to move from room to room without any constraints - No more wires, cords, tangles, just a lightweight, well balanced, comfortable indirect ophthalmoscope.

The next couple of pages will guide your choice but first read on to discover the benefits shared by all Keeler indirect ophthalmoscopes as standard.



go
wireless ≡

with Vantage and All Pupil II –
the market leading
indirect ophthalmoscopes!

Wired or Wireless Keeler leads the way

Clear, sharp images – enclosed KeeView Optics™

All Keeler indirect optics are specially coated and individually laser aligned to provide the sharpest clearest images every time you use your indirect, time after time, after time.

Comfort and balance

Lightweight materials are used throughout the design of each unit; combined with soft cushioning and a non slip contoured shaped headband to maximize comfort and balance. These features will be particularly appreciated during long examinations.

Easy fit push in/pull out bulbs

Keeler indirects have been designed to ensure optimal performance. Bulbs are easily accessible and quick to change. During surgical procedures, if your bulb should blow, our quick fit design ensures you won't be without it for very long.

Adjustable brilliant illumination


Why have all of the controls on the wall when the instrument is on your head? On All Pupil and Vantage the illumination rheostat is located on the headband providing easily accessible fully controllable light. Keeler indirects have the brightest illumination that can be turned down to as low as 2% of maximum required.


Wide angle diffuser


The Keeler wide angle diffuser eliminates shadows on the edge of the condensing lens expanding the field of view significantly, which is particularly useful during difficult and peripheral examinations. There is also less discomfort for the patient because the light is softer.





Apertures and filters


 **Red Free** - This filter is used to examine blood vessels in fine detail. By filtering out the red light, blood vessels are silhouetted against a green background.


 **Safety** - This filter should be used for all routine retinal examinations. It reduces ultra violet and visible blue hazard wavelengths.

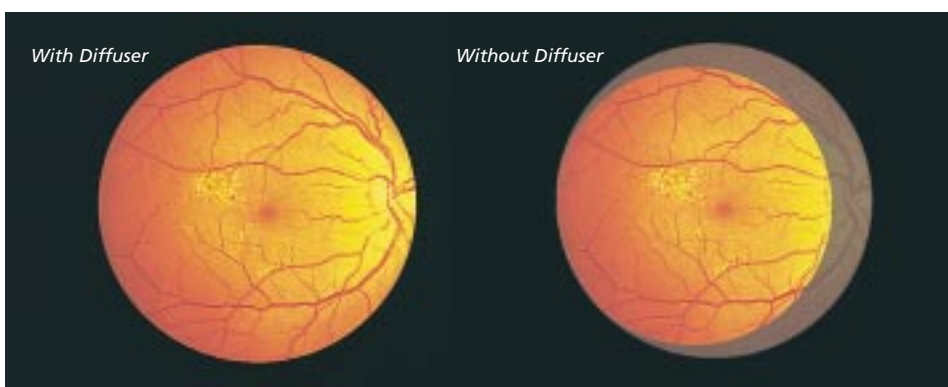
 **Cobalt Blue** - This filter is used with fluorescein dye for angiography.

 **Large Aperture** - Ideal when examining fully dilated pupils.

 **Intermediate** - Ideal for children and sensitive patients.

 **Small Aperture** - Ideal for undilated pupils.

 **Diffuser**



All Pupil II

Light, bright and easy to use

All Pupil II is based on the design of the number one selling All Pupil indirect. Look out for the new features designed to make your examinations easier and more comfortable.



Go Wireless

(Patent pending)

That's right no more wires and cords! The freedom to move from room to room without any constraints. Keeler is delighted to introduce this great "wow" feature to the number one selling indirect ophthalmoscope.

Outstanding brightness for difficult examinations

With 2000 lux of light, which can be turned down to 2% of total illumination when necessary, All Pupil II offers maximum illumination with total control.

Lightweight and comfortable

The new design weighs just 520 grams and extra padded materials have been incorporated into the headband to make this indirect extremely comfortable for all examinations.

Simple controls

The All Pupil II has a unique single control to change aperture size and position in one movement to view through all pupil sizes.

IR and UV barrier

There is a built in full time IR and UV barrier which guarantees improved patient protection and safety.



P D Range: 47 - 75mm

Part Numbers	1204-P-4000	Wireless All Pupil II with (2) Lithium Batteries & Docking Station
	1202-P-6237	Wireless All Pupil II without power and Lithium-Ion battery
	1204-P-3100	Wired All Pupil II without power
	1945-P-1001	SmartPack for Wired All Pupil II
	1945-P-1000	WallPack for Wired All Pupil II

Wireless Indirect Power Supplies

Lithium-ion Battery

- Lightweight
- 120 minutes of continuous use
- Usable charge in 5 minutes



Lithium-ion Docking Station Charger

Docking Station can be wall or desk mounted with location for spare battery, which means you will always have a back-up.

- Complete Fast charge in 2 hours
- Usable charge in 5 minutes



Part Numbers	1919-P-1013	Spare Lithium Battery
	1941-P-1384	Charging Station

Wired Indirect Power Supplies

SmartPack

SmartPack is a stylish power supply system that combines 3 options in one product. No longer will you need to purchase a portable system for domiciliary use, another system for mounting on your wall and another for tabletop use. All you need now is SmartPack.

Fast charge and long life

Nickel Metal Hydride technology provides a genuine long life of 2 hours and a fast charge within 2 hours. Instruments can be used when battery is charging. LEDs indicate when battery life is low, charging or fully charged.

Part Number	1945-P-1001
-------------	-------------



WallPack

Alternatively, if your power supply needs to be stationary you can purchase the WallPack which fits neatly on the wall.

Your indirect can be placed on the convenient micro-switch station it comes with.

Part Number	1945-P-1000
-------------	-------------

