

1. Setup

For iOS device:

- a. Visit the App Store on your iPod Touch device and download the application ClearView².
- b. Place your device into the ClearView 2 indirect lens holder.



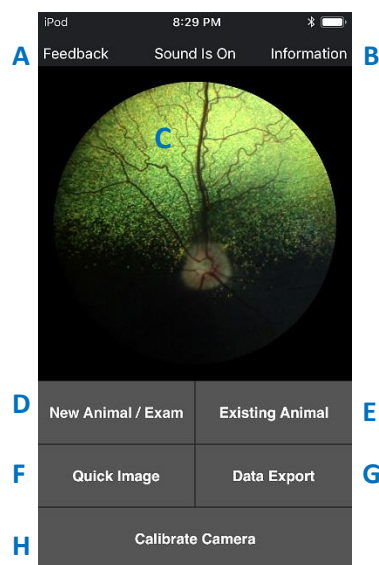
2. Start the application



Press on the ClearView 2 application icon to start the app. On the first start up you will be presented with a choice to use in HIPAA compliant encrypted mode or unencrypted mode. If you choose to encrypt your information you will need to enter the encryption key each time you log in.

3. Application Guide

- A. Let us know your thoughts.
- B. View guides and helpful content to using your new Optibrand ClearView 2.
- C. Main Imaging Display.
- D. New animal imaging session.
- E. View existing imaging sessions or begin a new session on an existing animal.
- F. Take quick imaging sessions on patients without storing results.
- G. Export data within application to PC.
- H. Complete Exam/Calibrate Camera.



4. Calibrating the Camera

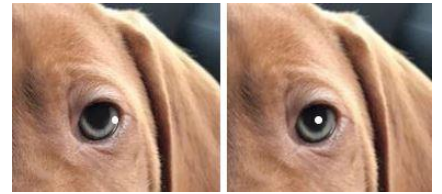
The camera focus and alignment must be calibrated before imaging an animal for the first time. Calibrate camera lens down on a white piece of paper using the button located at the bottom of the Main Program Display (H) and follow the onscreen instructions.

5. Imaging

1. Select either New Animal/Exam (D) or Existing Animal (E) from the Main Program Display.
 - a. If New Animal – enter either the patient ID or first name/last name/birth date.
 - b. If Existing Animal – Once you have previously imaged with the ClearView2, select the animal starting from the Animal Record Identifier Display.
2. Select Image Left Eye (for new animal) or New Exam (for existing animal).
3. Position the ClearView 2 Optical Imaging System approximately 100mm from the animal's eye.
 - The device can be used according to user preference with either the left or right hand at the front. The front hand should be placed on the lens grip at the very front of the device for the best control.



4. For best results, the operator should concentrate on the positioning of the LED light on the eye instead of on the display screen, only glancing at the screen occasionally.
5. Move the ClearView 2 device towards the animal until a tight white dot is just to the right of the pupil. If you are too close or too far away the white dot will grow in size. Optimal working distance occurs when the white dot is as small as possible.
6. Move it slightly to the left so the white dot is in the middle right side of the pupil, stabilize device for a second to focus and the RetCheck® Auto-Capture capability will begin to acquire and save retinal images (indicated by momentary flash and/or audible capture sound).
7. Once the software begins capturing images let it continue to capture for several seconds so that the software can optimally focus the camera and save the highest quality images that it finds. Image memory will save up to 9 of the best captured retinal images.
8. At the user's discretion, user-snapped images can be obtained by touching the retinal image on the main display. (C)
9. Select Complete Examination (H) from the Main Program Display.
10. Press on the Image Display Section to view gallery of taken images. You may select images to delete or click on an image to enlarge and use the sharing button.



6. Quick image

Pressing the Quick Image (F) button will start an imaging session and provide the user with a quick way to conduct an imaging session. The images that are stored during a Quick Image session have no animal information attached and should not be used where image retention is required.

7. Data Export

The ClearView 2 application supports sharing images within the image gallery using the Data Export (G) button and can export to a PC via iTunes.

Quick Tips

- Don't worry if the camera is capturing images that are clearly not retina as you move into the eye. These will be overwritten by retina shots once the retina is visualized on the screen.
- Practice makes perfect. The more you use the ClearView 2 the quicker you will be able to capture images. This keeps the animal's discomfort to a minimum.
- Use the hand nearest the animal's forehead to control the pupil centration (it can be tricky to get right at first).
- For Complete Instructions for Use, Go To: www.optibrand.com/veterinarydiagnostics



Optibrand Ltd., LLC, 320 E Vine Drive, Ste 101, Fort Collins, CO 80524

P 970.490.6022 | E info@optibrand.com | www.optibrand.com

