



Training Eye

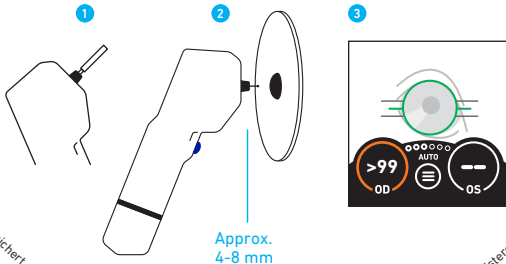
IOP will always
read >99



Training Aid

For more details, refer to the Quick Start and Instructions for Use.

- 1 Load an Ocu-Dot™ Tonometer Probe.
- 2 Hold Training Aid in the palm of one hand. In the other hand hold Tono-Vera™ Vet Tonometer so the Ocu-Dot Tonometer Probe is perpendicular to the training eye.
- 3 Tono-Vera Vet Tonometer will automatically measure when aligned.



Tono-Vera is a trademark of Reichert, Inc. • Reichert and Reichert Technologies are registered trademarks of Reichert, Inc. • AMETEK is a registered trademark of AMETEK, Inc. • 16308-878 Rev. A